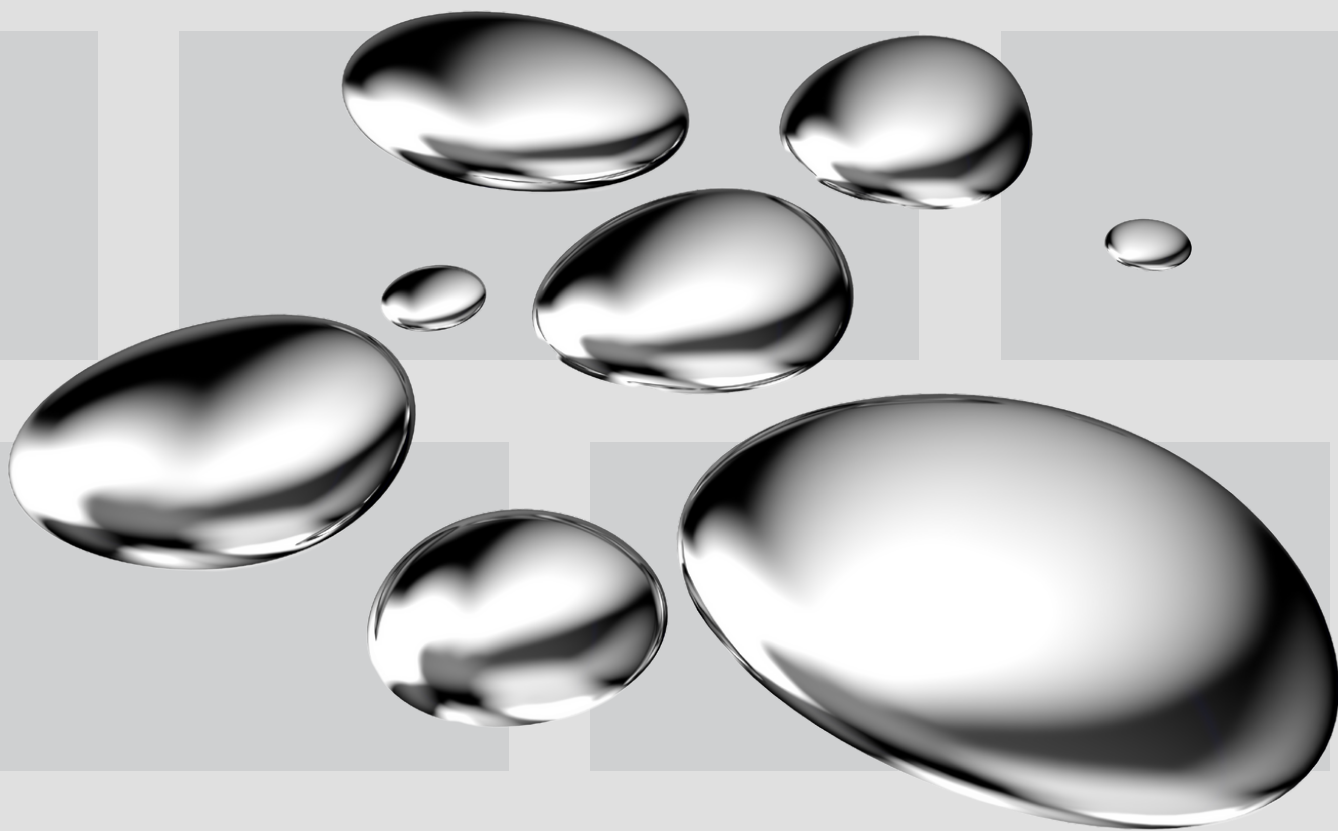


What to do in the event you spot mercury



ICE CLEANING

THE UK'S CLEANING EXPERTS

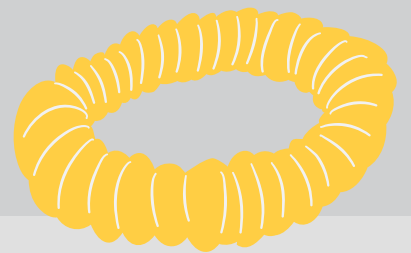
Call professional mercury cleaning removal services

**Due to the toxicity of the
element, any mercury
spillage bigger than one
pound needs to be
removed by qualified
professionals.**



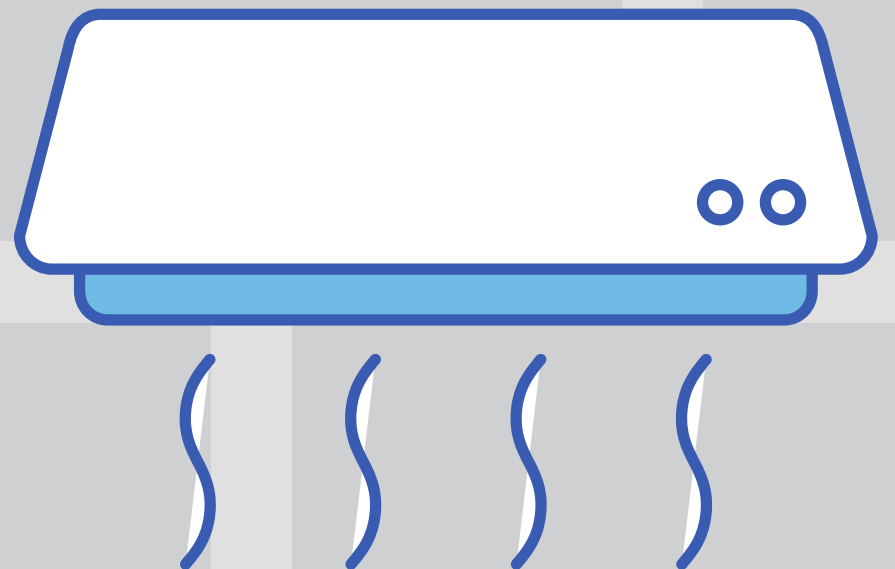
Evacuate the affected area immediately

Remove and dispose of any contaminated clothing, including shoes and hair accessories.



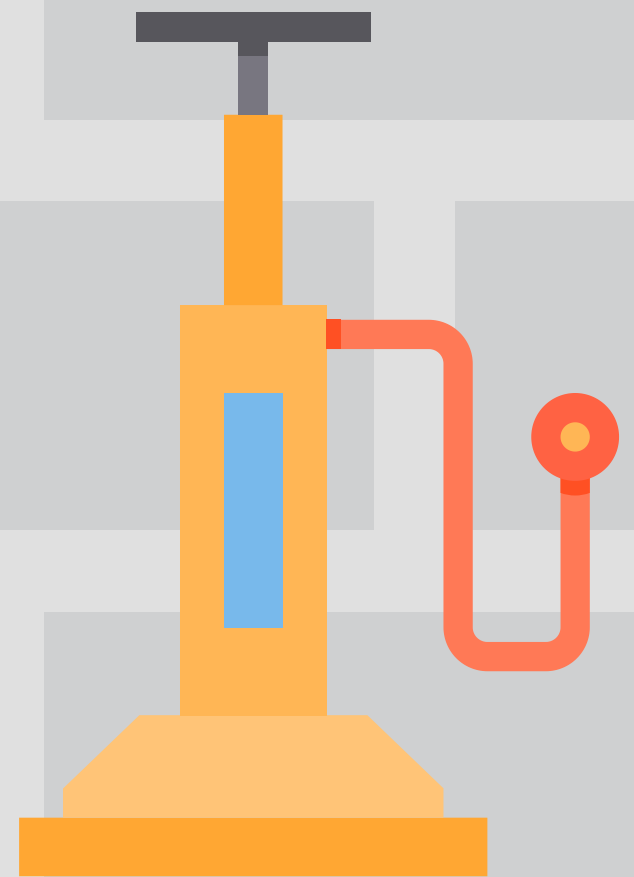
Turn the air conditioning off

Doing this will help to prevent contaminated air from circulating around the building.



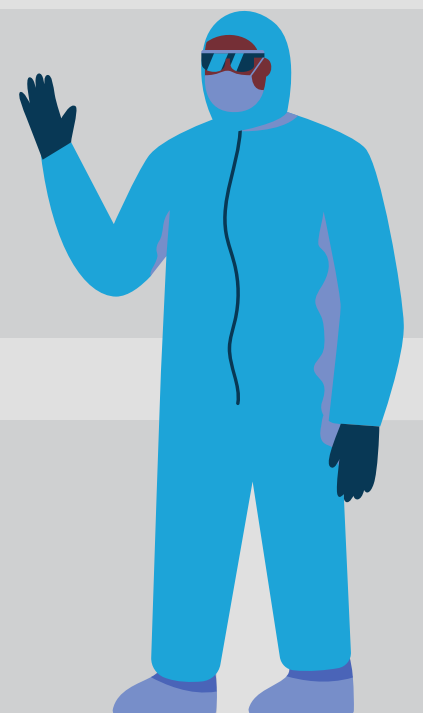
Do not use a vaccuum

This should not be undertaken without professional help. Mercury must then be disposed at a hazardous removal site.



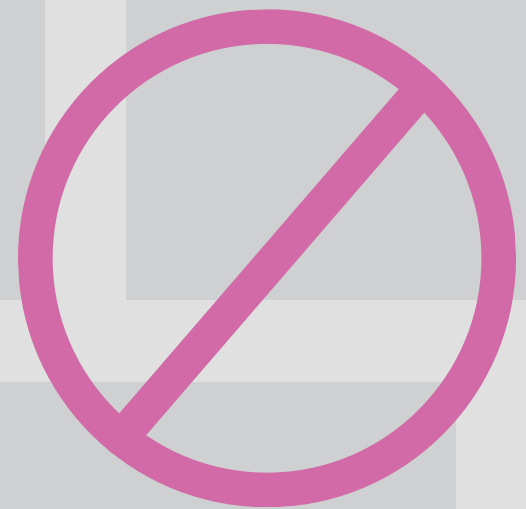
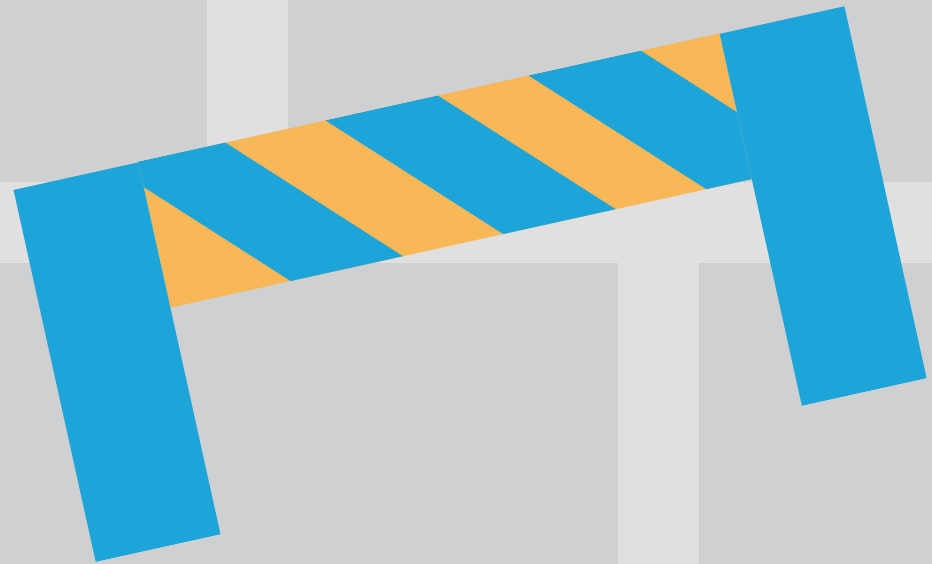
Be cautious of sharp items

Do not try to remove sharp items from the affected area without the right personal protective equipment.



Barricade the area

This will prevent others entering the affected area. It may also help to put up signs to make this clear.



**If you're unable to
leave the area...**

**Try to cover your
face and skin. This
should ideally be
with latex, nitrile or
rubber gloves. A
filtered face mask is
also advisable.**

